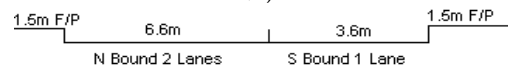
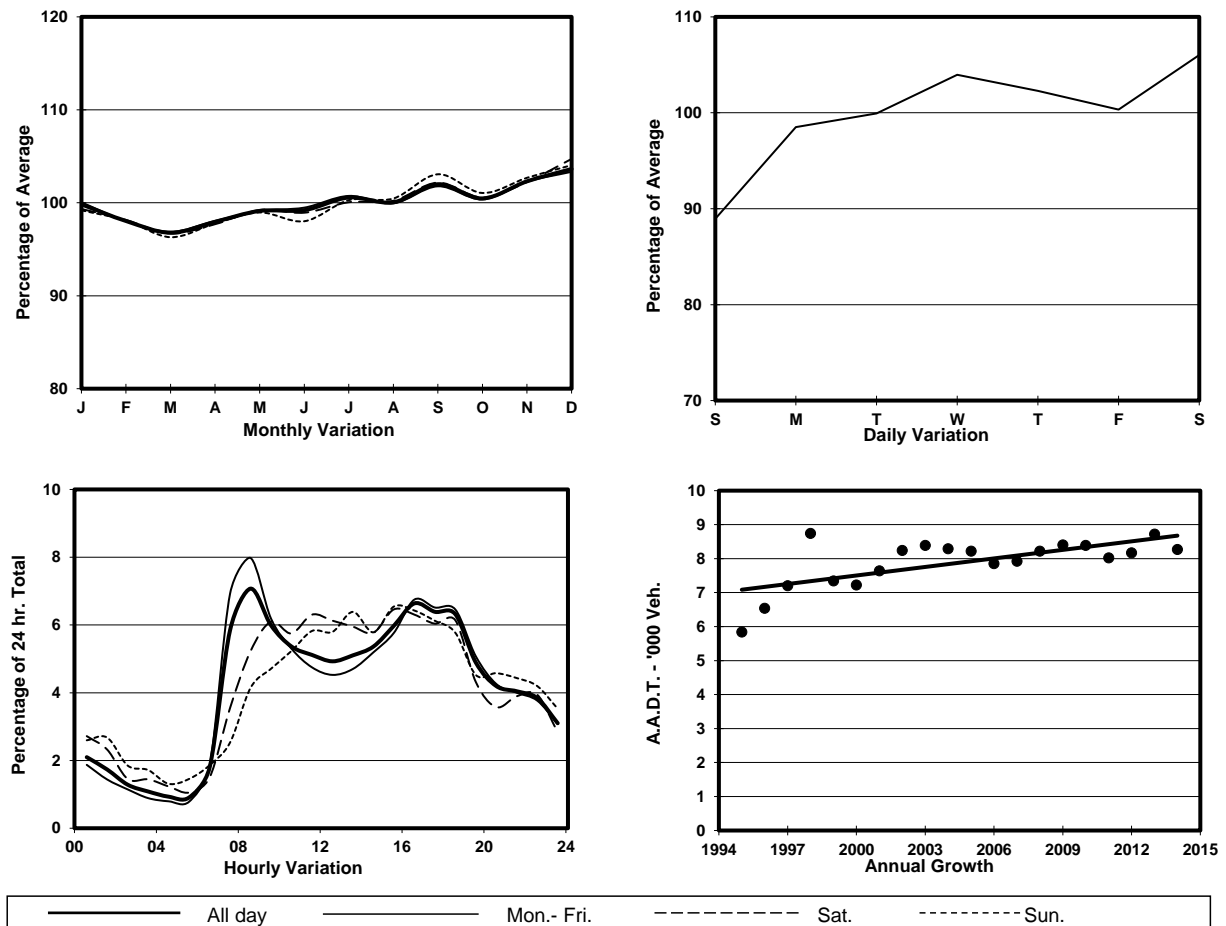


YEAR 2014
 COVERAGE (B) STATION 6210
 ROAD NETWORK MAJOR
 ROAD TYPE RURAL ROAD

LINK TAI PO RD - MA LIU SHUI (from ENTRANCE TO
 CHUNG CHI COLLEGE, CUHK to YUEN CHAU TSAI
 INT)



1. TRAFFIC FLOW VARIATION AND GROWTH



2. TRAFFIC CHARACTERISTICS (BY DIRECTION)

Parameter	All - Day	Mon. - Fri.	Sat.	Sun.
SOUTH BOUND				
A.A.D.T.	4290	4480	4230	3600
R 12 / 24 - %	67.8	68.6	68.4	62.8
R 16 / 24 - %	87.7	88.9	86.1	83.2
AM Peak Hour	0800-0900	0800-0900	0900-1000	0800-0900
One-way flow at AM peak hour	250	300	240	150
T - % (AM)	-	8.6	-	-
PM Peak Hour	1800-1900	1800-1900	1600-1700	1600-1700
One-way flow at PM peak hour	320	360	290	240
T - % (PM)	-	5.4	-	-
Prop.of commercial vehicles - 16 hr.	-	8.1	-	-
NORTH BOUND				
A.A.D.T.	3980	3930	4600	3790
R 12 / 24 - %	72.5	73.8	70.9	67.6
R 16 / 24 - %	86.4	87.3	84.9	82.8
AM Peak Hour	0800-0900	0800-0900	0900-1000	0900-1000
One-way flow at AM peak hour	330	380	300	220
T - % (AM)	-	7.9	-	-
PM Peak Hour	1600-1700	1600-1700	1800-1900	1700-1800
One-way flow at PM peak hour	240	230	270	240
T - % (PM)	-	9.3	-	-
Prop.of commercial vehicles - 16 hr.	-	8.9	-	-

3. OTHER INFORMATION AND COMMENT

Coverage (B) Station 6210
Year 2014

4. Vehicle classification and occupancy - Monday to Friday

Time		Class of vehicle									
		Motor	Private	Taxi	Private	PLB	Goods veh.		Non	Fr. Bus	
		Cycle	Car		LB		Light	M & H	Fr. Bus	SD	DD
0700-0800	Pro	1.1	45.8	16.8	6.7	8.9	5.6	7.8	2.2	2.8	2.2
	Ocp	1.0	1.5	1.3	5.0	9.9	1.8	1.0	2.5	21.1	40.4
0800-0900 Peak hour	Pro	1.9	60.5	13.4	2.5	8.3	5.1	1.3	3.2	1.8	2.1
	Ocp	1.7	1.6	1.1	9.0	10.4	1.6	1.0	4.8	23.9	27.7
0900-1000	Pro	0.8	59.6	7.8	1.6	8.6	16.5	1.6	0.0	1.6	2.0
	Ocp	1.0	1.3	1.4	1.5	7.2	1.5	1.0	0.0	14.1	10.6
1000-1100	Pro	0.0	50.5	17.9	0.0	7.4	13.7	3.2	3.2	2.6	1.6
	Ocp	0.0	1.6	1.2	0.0	6.1	1.5	1.3	1.7	10.0	14.7
1100-1200	Pro	1.2	52.5	9.6	1.2	8.4	20.3	1.2	0.0	2.4	3.3
	Ocp	1.0	1.4	1.5	1.0	5.7	1.4	1.0	0.0	10.6	12.2
1200-1300	Pro	0.0	45.6	12.1	2.7	9.4	16.1	4.0	4.0	3.4	2.7
	Ocp	0.0	1.3	1.4	3.0	6.0	1.9	1.3	4.3	10.4	13.6
1300-1400	Pro	0.0	46.6	18.4	0.0	8.5	9.9	9.9	0.0	3.5	3.2
	Ocp	0.0	1.4	1.5	0.0	7.0	1.3	1.1	0.0	11.9	20.6
1400-1500	Pro	1.7	48.0	16.0	1.7	9.3	10.1	8.4	0.8	2.1	1.9
	Ocp	1.0	1.5	1.2	1.0	6.8	1.4	1.2	2.0	13.0	24.4
1500-1600	Pro	2.0	60.4	6.9	1.0	5.9	14.9	2.0	2.0	2.7	2.2
	Ocp	1.0	1.6	1.4	4.0	8.7	1.6	1.0	1.5	10.6	22.8
1600-1700	Pro	2.9	49.7	20.2	2.9	5.0	10.1	2.9	2.9	1.8	1.6
	Ocp	1.5	1.5	1.4	9.3	6.9	1.6	1.0	6.8	10.3	29.3
1700-1800	Pro	2.9	57.6	10.6	3.8	7.7	9.6	0.0	3.8	2.6	1.4
	Ocp	1.0	1.4	1.2	9.0	12.3	2.0	0.0	12.5	20.1	38.5
1800-1900	Pro	2.3	77.9	6.9	0.0	7.6	0.8	0.8	0.0	1.5	2.3
	Ocp	1.0	1.4	1.6	0.0	12.8	2.0	1.0	0.0	25.5	41.1
1900-2000	Pro	3.7	65.3	12.0	0.0	8.3	4.6	0.9	0.9	2.1	2.3
	Ocp	1.0	1.5	1.5	0.0	9.3	1.4	1.0	1.0	19.6	29.6
2000-2100	Pro	1.2	62.8	15.1	0.0	12.8	3.5	0.0	0.0	2.6	2.0
	Ocp	1.0	1.3	1.8	0.0	10.3	1.7	0.0	0.0	13.6	27.7
2100-2200	Pro	0.0	59.1	16.4	0.0	17.6	1.3	0.0	0.0	3.1	2.5
	Ocp	0.0	1.5	1.4	0.0	10.8	1.0	0.0	0.0	12.7	22.1
2200-2300	Pro	1.1	53.6	17.9	0.0	20.1	3.4	0.0	0.0	2.0	2.0
	Ocp	1.0	1.5	1.1	0.0	6.7	2.0	0.0	0.0	12.3	20.7
16 hours	Pro	1.6	56.8	13.4	1.6	9.2	8.9	2.6	1.5	2.3	2.1
	Ocp	1.2	1.4	1.3	6.0	8.7	1.6	1.1	5.2	15.0	24.9

Legend

Pro. Proportion of vehicles in % (Sum may not add up to 100% due to figure rounding)
Ocp. Average occupancy of vehicles
M&H Medium and Heavy